

# HAINES *Signature*™



2025 FACTORY  
FITTED OPTIONS





CRUISING FEATURES



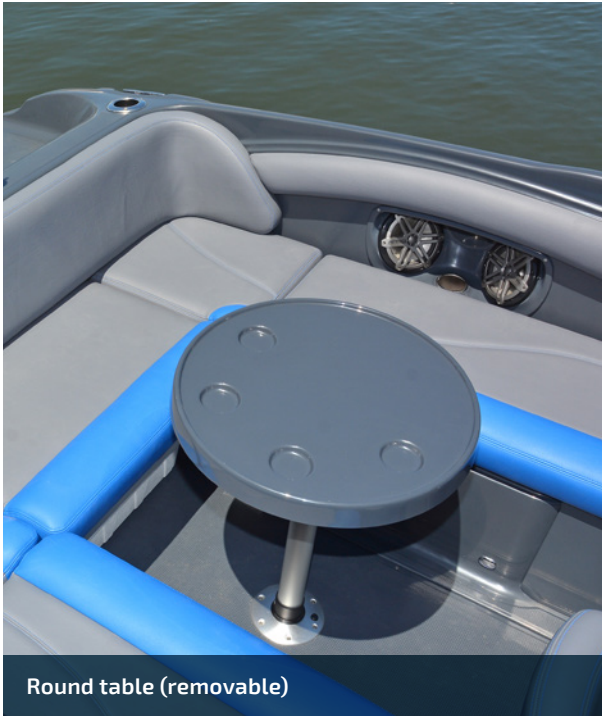
Cabin sidepockets



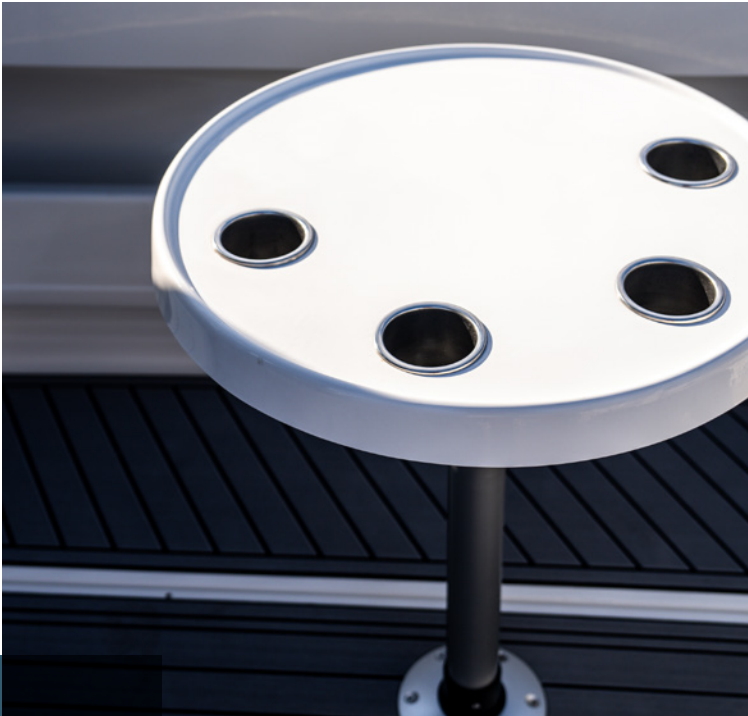
Cabin door – sliding with lock



Porta Potti toilet



Round table (removable)



Electric troll motor pre-wire & mount (no motor fitment)



Under gunwale strip lighting



Recessed cockpit lighting (pair)



Underwater lighting (pair)



Wireless charging cradle for mobile phone



Deck lights – mounted on targa

ELECTRICS



Cabin led strip light



FISHING FEATURES



Outriggers (stainless steel)



Winch kit – drum winch



Rod rack – suits 3 rods (stainless steel)



Live bait tank & deck wash & forward live well



Bait prep board – fibreglass folding includes rod holders

FISHING FEATURES



A variety of live bait tank and deck wash options are available.

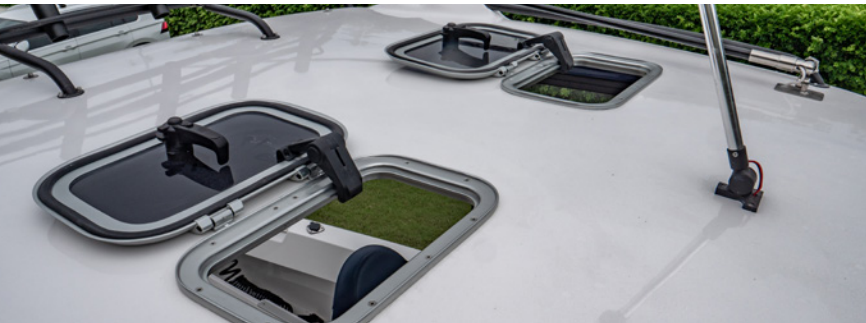




GENERAL CONVENIENCE & CONSTRUCTION



Hard top – fully enclosed with fixed side windows and centre roof hatch



Hard top – second hard top hatch



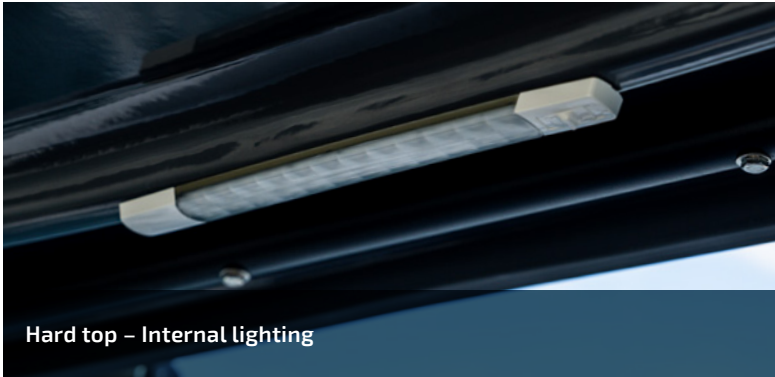
Compass – binnacle mount



Keel guard (fibreglass)



Cockpit coaming – upholstered



Hard top – Internal lighting



Hard top – stainless steel pull out bimini extension (680F only)



Glove box in dash – upgrade to lid with lock



Windscreen wipers/washer combo



Transom step with rails (pair) with ladder



Hard top – second rod rack with five rod holders





HARDWARE FITTINGS



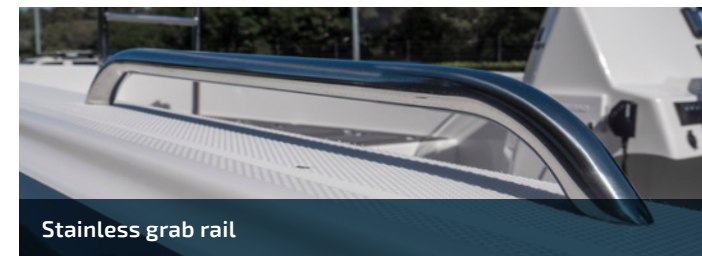
Steering wheel with knob (stainless steel)



Signature Phender Pro kit



Cleat – extra pop up (pair)



Stainless grab rail



Windscreen grab rail (stainless steel)



Windscreen – upgrade to stainless steel support



Targa – premium folding (stainless steel)



Bow rail – split (pair)



Gas strut for hatches



Bow eye L&R latch combo – trailer & boat



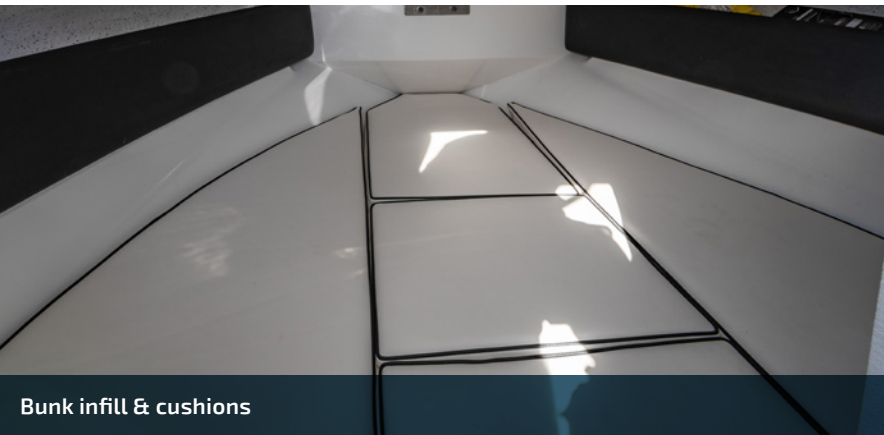
Targa – fixed or folding (stainless steel) (dealer fitted bimini)

HARDWARE FITTINGS





SEATING & UPHOLSTERY



Bunk infill & cushions



Cushion – forward casting platform



Aft lounge drop down



FRP seat box riser with access hatch/tackle cupboard



Aft lounge folding



Stainless steel riser with esky below



Full rear face bench seat (620BRX only)



THG bolster bucket seats

SEATING & UPHOLSTERY



Leaning post with cushion (bow) 543SF ONLY





SPORTS FEATURES



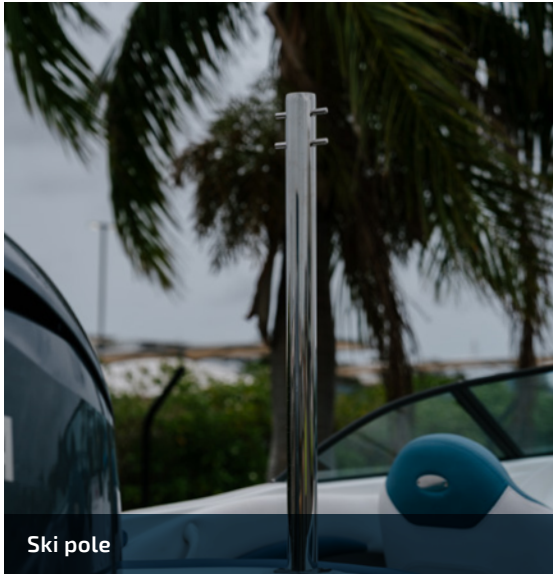
Bow infill & cushion with air dam



Ski pole / bait board combo



Bow tonneau



Ski pole



Please refer to pages 14 to 19 for specific model options availability.



Black power coated stainless steel



Black windscreen frame

Please refer to pages 14 to 19 for specific model options availability.

SIGNATURE STEALTH KIT

What's included in a Signature stealth kit:

All fitted stainless steel rails and targa (if fitted) will be powder coated black; black windscreen frame; black navigation lights; gunwale rubber; and ski pole (if fitted).

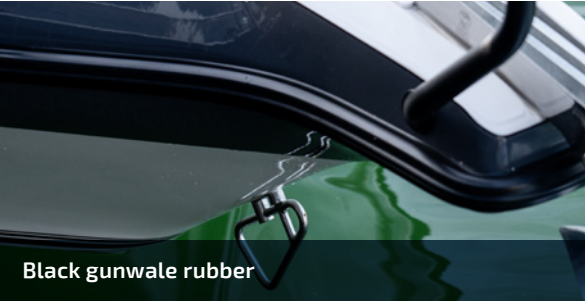
Please note: cleats, Phender Pro, anchor and inside grab rail are not powder coated.



Black power coated stainless steel



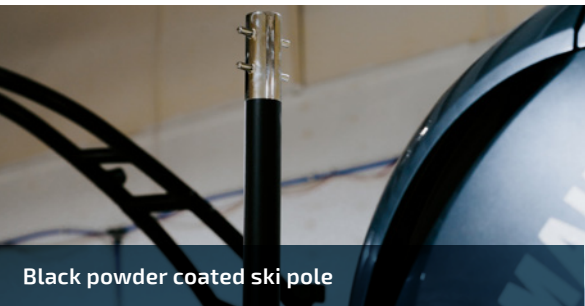
Black powder coated stainless steel



Black gunwale rubber



Black navigation light



Black powder coated ski pole

Haines Signature – 2025 options | 13



FACTORY FITTED OPTIONS										
0 = Optional   – = N/A										
CRUISING FEATURES										
Cabin door – sliding with lock	–	–	–	–	–	–	0	–	–	–
Cabin sidepockets	0	–	–	–	–	–	–	–	–	–
Handheld shower (only available with options that have fresh water tank)	–	–	–	–	–	–	–	–	–	–
Porta potti toilet	–	–	–	–	–	–	0	–	–	–
Rectangle table (removable)	–	–	–	–	–	0	–	–	–	–
Round table (removable)	0	–	–	0	0	–	0	0	0	0
Sunshade for bow – black only	–	–	–	–	–	–	–	–	–	0
ELECTRICS										
3 battery system – includes commissioning of digital switching system	–	–	–	–	–	–	–	–	–	0
Cabin led strip light	0	–	–	0	–	–	–	–	–	–
Deck lights Seahawk XL red/white dual colour – mounted on targa	–	–	–	0	–	–	0	0	0	–
Electric troll motor pre–wire & mount – 24V & 12V (no motor fitment)	–	–	–	–	–	–	–	–	–	–
Hot water system (12 volt)	–	–	–	–	–	–	–	–	–	0
Live bait tank lights – blue	–	–	–	0	–	–	0	0	0	–
Recessed cockpit lighting (pair)	0	–	–	0	0	–	0	0	0	–
Under gunwale strip lighting	0	–	–	0	0	–	–	0	0	–
Underwater lighting (pair)	0	0	0	0	0	0	0	0	0	0
Wireless charging cradle for mobile phonev	0	0	0	0	0	0	0	0	0	0

FACTORY FITTED OPTIONS										
0 = Optional   – = N/A										
FISHING FEATURES										
Bait prep board – fibreglass folding includes rod holders	0	–	–	–	–	–	0	0	0	0
Bait prep board and pole to suit ski pole mount (must be ordered with ski pole)	–	–	–	0	0	0	–	–	–	–
Deck wash only	0	0	0	0	–	–	0	0	0	–
Live bait tank (rcd) & deck wash (cde) & fwd live well (cde)	–	0	0	–	–	–	–	–	–	–
Live bait tank & deck wash – both fitted in casting deck extension	–	0	0	–	–	–	–	–	–	–
Live bait tank & deck wash – both fitted in rear casting deck	–	–	–	–	–	–	–	–	–	–
Live bait tank plumbing	0	–	–	0	–	–	0	0	0	–
Live bait tank/deck wash	0	–	–	0	–	–	0	0	0	–
Outriggers – 4.5m gunwale mount – fully rigged & reinforced	–	–	–	0	–	–	0	0	–	–
Outriggers – mounted to T-Top	–	–	–	–	–	–	–	–	–	0
Outriggers – stainless steel includes 15ft poles – fully rigged & deck reinforced	–	–	–	–	–	–	–	0	0	–
Rod rack – suits three rods (stainless steel)	–	0	0	–	–	–	–	–	–	–
Tackle boxes in side boxes (x2) – fibreglass	–	–	–	–	–	–	0	–	–	–
Winch kit including drum winch (Viper 1000 Micro Series) – 60m rope & chain, swivel 16lb galv plough anchor	0	0	0	–	0	–	–	–	–	–
Winch Kit including drum winch (Viper S1000 Rapid Series) – 75m rope & chain, swivel and 20lb galv plough anchor	–	–	–	0	–	–	0	0	0	–

**DISCLAIMER:** The Haines Signature is constantly working to build a better product, always check with your Signature dealer as we reserve the right to change specifications, fittings, inventory and prices without notice. Images are for illustration purposes only and may be subject to change.



FACTORY FITTED OPTIONS										
0 = Optional   – = N/A										
GENERAL CONVENIENCE & CONSTRUCTION										
Alloy T-Top with soft top & six rod rocket launcher – powder coated	–	–	–	–	–	–	–	–	–	0
Bow/deck infill under fibreglass casting platform	–	–	–	–	–	–	–	–	–	0
Cockpit coamings – upholstered	–	0	0	–	–	–	–	–	–	–
Compass – binnacle mount	–	–	–	–	–	–	0	0	0	–
Glove box in dash – upgrade to lid with lock	0	–	–	0	–	–	–	–	–	–
Gunwale extrusion (aluminium)	–	–	–	–	–	–	–	–	–	–
Hard top – FRP with aluminium support & rear flood light (led) – frame powder coated	–	–	–	–	–	–	–	–	–	0
Hard top – fully enclosed with fixed side windows and centre roof hatch	–	–	–	–	–	–	–	0	0	–
Hard top – second hard top hatch	–	–	–	–	–	–	–	0	0	–
Hard top – second rod rack on hard top with five rod holders	–	–	–	–	–	–	–	0	0	–
Hard top – stainless steel pull out bimini extension	–	–	–	–	–	–	–	–	0	–
Hard top – windscreen wiper – each (port/starboard)	–	–	–	–	–	–	–	0	0	–
Hard top – windscreen wiper/washer combo – each (port/starboard)	–	–	–	–	–	–	–	0	0	–
Keel guard (fibreglass)	0	0	0	0	–	–	–	–	–	–
Remove forward casting platform	–	–	–	–	–	–	–	–	–	–
Remove forward casting platform extension	–	–	–	–	–	–	–	–	–	–
Rod locker – lockable include upgrade to carpeted – dark grey only	–	–	–	–	–	–	–	–	–	
Roswell CAM RT narrow tower – anodised or black	–	–	–	–	0	0	–	–	–	–
Roswell CAM RT sun top	–	–	–	–	0	0	–	–	–	–
Roswell Elite ski rack	–	–	–	–	0	0	–	–	–	–
Roswell Elite wake rack	–	–	–	–	0	0	–	–	–	–
Roswell Elite wake/knee rack	–	–	–	–	0	0	–	–	–	–
Roswell mag swivel for CAM RT tower – required for racks/speakers	–	–	–	–	0	0	–	–	–	–
Second access hatch in centre console – starboard side	–	–	–	–	–	–	–	–	–	–

FACTORY FITTED OPTIONS										
0 = Optional   – = N/A										
Timber free construction (Thermo-lite)	0	0	0	0	0	0	0	0	0	–
Transom step with rail (port only) with ladder	0	0	0	0	–	–	–	–	–	–
Transom steps with rails (pair) with ladder	0	0	0	0	–	–	–	–	–	–
Upgrade to enclosed windscreen for hardtop	–	–	–	–	–	–	–	–	–	0
Vinyl Ester Tie laminate upgrade – recommended for moored boats	–	0	0	0	0	0	0	0	0	–
HARDWARE FITTINGS										
13" steering wheel with knob (stainless steel)	0	0	0	0	–	–	0	–	0	–
Bow eye L&R latch for boat only	–	–	–	–	–	–	0	0	0	0
Bow eye L&R latch trailer & boat combo	–	–	–	–	–	–	0	0	0	0
Bow rail – low profile	–	–	–	–	0	0	–	–	0	–
Bow rail – Split (pair)	0	–	–	0	–	–	0	–	–	–
Bow roller	–	–	–	–	–	–	–	–	–	–
Bow roller – hinged	–	0	0	–	–	–	–	–	–	–
Bow roller and pop up cleats	–	–	–	–	0	–	–	–	–	–
Cleats – extra fold up (pair)	–	0	0	–	–	–	–	–	–	–
Cleats – extra pop-up (pair)	–	–	–	–	0	–	–	–	–	–
Gas strut for hatch (ea)	–	0	0	–	–	–	–	–	–	–
Grab handle – each (stainless steel)	–	–	0	–	–	–	–	–	–	–
Phender Pro Signature kit – 4 x receivers & 2 x pins with rope	–	–	–	–	–	–	–	–	–	–
Side rails – rear corner pair (stainless steel)	–	–	–	–	–	–	–	–	–	–
Signature stealth kit – black powder coated stainless, windscreen frame, ski pole (if applicable), and black gunwale rubber	0	0	0	0	0	0	0	0	0	0
Targa – fixed (stainless steel)	0	–	–	0	–	–	–	–	–	–
Targa – folding (stainless steel)	0	–	–	0	–	–	0	–	–	–
Targa – premium folding (stainless steel)	–	–	–	–	–	–	0	0	0	–



FACTORY FITTED OPTIONS											
0 = Optional   – = N/A	525F	5435F-CC	5435F-SC	545F	550BR	620BRX	620F	640F	680F	7885F	
Windscreen grab rail (stainless steel)	-	-	-	-	0	0	0	0	0	-	
Windscreen poly with stainless steel support	-	-	-	-	-	-	-	-	-	-	
Windscreen upgrade to stainless steel support	-	-	0	-	-	-	-	-	-	-	
SEATING & UPHOLSTERY											
Aft lounge drop down	-	-	-	-	-	-	-	-	-	0	
Aft lounge folding	0	-	-	0	-	-	-	-	0	-	
Bunk infill and cushion	0	-	-	0	-	-	0	0	0	-	
Ceiling lining – full cabin	-	-	-	-	-	-	0	0	0	-	
Cushion – Aft outboard well	-	-	-	-	-	-	-	-	-	-	
Cushion – Fwd casting platform	-	-	-	-	-	-	-	-	-	0	
Cushion – Fwd casting platform extension	-	-	-	-	-	-	-	-	-	-	
Cushions – Aft corner seating & back rest	-	-	-	-	-	-	-	-	-	-	
Cushions – Aft corner seating	-	0	0	-	-	-	-	-	-	-	
Leaning post with cushion (bow)	-	0	0	-	-	-	-	-	-	-	
Port back to back seating with storage below incl galley, freshwater tank, stove, cupboards, icebox and plumbing	-	-	-	-	-	-	-	-	-	-	
Seating – custom colour upholstery upgrade	-	0	-	-	-	-	-	-	-	-	
Seating – Extra rod storage on centre console seat	-	0	-	-	-	-	-	-	-	-	
Seating – Upgrade passenger bucket to full rear face bench seat	-	-	-	-	-	0	-	-	-	-	
Seating – Upgrade to FRP seat box riser with access hatch (ea)	0	-	-	0	-	-	-	-	-	-	
Seating – Upgrade to FRP seat box riser with tackle cupboard (ea)	-	-	-	-	-	-	0	0	0	-	
Seating – Upgrade to stainless steel risers with esky below (ea)	-	-	-	-	-	-	0	0	0	-	
Seating – Upgrade to stainless steel risers with esky below (ea) – kill tank opening with hinged lid	-	-	-	0	-	-	-	-	-	-	
Seating – Upgrade to THG bolster buckets seats (ea)	0	-	-	0	-	-	-	-	-	-	

FACTORY FITTED OPTIONS											
0 = Optional   – = N/A	525F	5435F-CC	5435F-SC	545F	550BR	620BRX	620F	640F	680F	7885F	
SPORTS FEATURES											
Bow infill & cushion with air dam	-	-	-	-	-	0	-	-	-	-	
Bow tonneau	-	-	-	-	0	0	-	-	-	-	
Ski pole	0	-	-	0	0	0	-	-	-	-	
STEERING & RIGGING											
Electronic power steering system install for single OBM	-	-	-	-	-	-	-	-	-	0	
Electronic power steering system install for twin OBM – including transom plate	-	-	-	-	-	-	-	-	-	0	
Steering – upgrade hydraulic to tilt hydraulic steering	-	0	0	-	0	-	0	0	-	-	
Steering – upgrade mechanical to hydraulic steering	0	-	-	0	-	-	-	-	-	-	
Steering – upgrade mechanical to tilt hydraulic steering	0	-	-	0	-	-	-	-	-	-	
Steering – upgrade to twin engine hydraulic steering – req as min for twin outboard	-	-	-	-	-	-	-	-	-	0	
Trim tabs – Lectrotab 12x12 stainless steel plates with standard switch	-	-	-	-	-	-	-	-	0	-	
Trim tabs – Lectrotab 12x9 stainless steel plates with standard switch	-	0	0	-	-	-	0	0	-	-	
Trim tabs – upgrade to LED switch with auto-retract	-	0	0	-	-	-	0	0	0	0	



HAINES  
*Signature*™



[info@theboatgroup.com.au](mailto:info@theboatgroup.com.au)

[hainessignature.com.au](http://hainessignature.com.au)